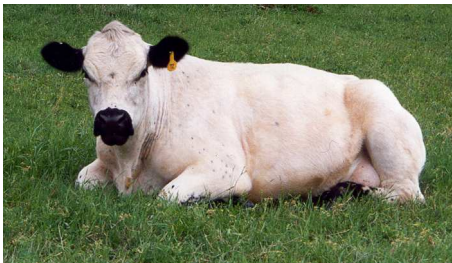


*Halliburton Farms
Breeders of
American Fullblood
British White
Cattle*

←→
*Leaders
in
Improvement
and
Promotion
of
The British White Breed
of
Beef Cattle in America.*
←→



A well marked British White Cow



British White Cattle on a peaceful summer day in Texas, USA

**American
Fullblood
British White
Cattle**



Halliburton Farms Breeding

British White Cow/Calf Pair showing the consistency we are breeding into our herd. ?

We invite your call or visit.

We would love to help you get started with your herd of Fullblood British Whites.

We try to keep breeding stock available for sale at all times.

**Call Today
800-228-4543
Local Phone: 903-965-4509
Fax: 903-965-5452
Email: MorrisHalliburton@direcway.com
Web: www.britishwhite.com**

Why We Breed American Fullblood British White Cattle

←→
More overall purity & consistency. American Fullbloods are a result of breeding up a minimum of three more generations above the purebred level using full English genetics.

Gentle Breed.

British Whites are possibly the most gentle cattle of any beef breed. This trait alone makes them your ideal choice whether you raise cattle as a hobby or on a commercial basis. British Whites are extremely easy to work with and it has been documented that gentle cattle do better on feed and hang a better carcass.

Fertility, Easy Calving & Excellent Milking Ability. The single most economic trait in the Beef Cattle Industry is the ability of a cow to give birth to her first calf at two years of age and then give enough milk to raise it on her own. Her second and each subsequent calf should arrive within 12 month intervals. Carrying a cow through a year's feeding without her producing a calf is probably the most unnecessary expense in the Beef Cattle Industry. British White won't let you down.

Efficient & Trouble Free. British White Cattle are known for their "Easy Keeping" and it is not at all unusual for a fifteen year old cow to have an udder that resembles that of young four year old. Their black ears, eyes, muzzle, teats and hooves reduces or eliminates the problems associated

with pinkeye, cancer eye, udder or feet problems.

Growth & Hardiness. British White Cattle have developed an ability that enables them to forage and graze in all kinds of adverse weather conditions. They thrive in either extreme heat or cold. British Whites have done well in all regions of the United States, South Texas to Georgia, to New York, to Minnesota, Nebraska, North & South Dakota, to California and throughout the Central & Midwest States. Coast to coast and Mexico to Canada.

Lean, Tender, High Grading and High Dressing Percentage. British White Beef is right for the times. The meat is very lean and tasty. A thin rind of back fat with a light flecking of marbling that sets off the obvious quality of a good steak or roast.

It is not at all unusual and has been well documented that an entire pen of British Whites will grade above 90% Choice & Prime while dressing out at over 65%.

←→ **Recommended Standards by British White Cattle Society of England**

Character: The BRITISH WHITE is a naturally polled, large and hardy native breed exhibiting the dual characteristics of beef and milking ability.

Colour: Must be white with black or red points, viz., nose, muzzle, pigment round the eyes, ears, teats of cows or rudimentary teats of bulls. Hooves and splash or spots of colour on the front of each fetlock. The skin showing dark pigmentation.

Head: Free from slugs or rudimentary horns. It should be of a fair length from eyes to muzzle, which should be broad. The heads of bulls should be masculine in character and



of cows, fine and feminine.

Body Conformation: Animals should be functional and free moving on sound feet, with a long level top line, not rising at the root of the tail, broad and expanding over the loins to hips, pin bones well apart especially in the bulls. The shoulders gently sloping and well set in, the ribs well sprung. The underline should be level. The hindquarters long from hook to pin, buttocks being well fleshed down to the hocks, which when viewed from the back, should be straight, turning neither inwards or outwards.

Udder: Level, well developed but not pendulous, the teats of moderate size, set evenly and pointed to the ground. It is important that the rudimentary teats of bulls should be wide set and well developed.

Skin: Should be fine and handle well.

←→ **Get Your Start Today.**

Let us help you get started with your herd of Fullblood British Whites. We try to keep breeding stock for sale at all times.

Halliburton Farms British White Cattle Morris & Jean Halliburton

200 Halliburton Drive
Bells, TX 75414

Local Telephone: 903-965-4509

Toll Free: 800-228-4543

Fax: 903-965-5452

Email: MorrisHalliburton@direcway.com

Web Page: www.BritishWhite.com

